

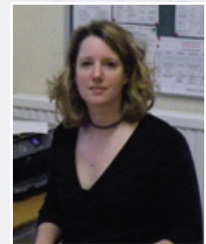


case study 03


Case Study for

Loxdale Centre 

“ Sagari have rescued us just in time from disaster. Since you have set-up our new systems we hardly have any problems so we finally have peace of mind. The fact we get unlimited support for a fixed fee means we now know exactly where we stand. Thank you to you and your entire team. ”



*Anna Thatcher,
Head Teacher
- Loxdale Centre*

 Loxdale Centre is a school for teaching English across any nationality. The school is based in a Victorian mansion near Brighton where they have over 40 workstations for teachers and pupils.

We began by fixing Loxdale's current wireless network where the signal would not reach external teaching huts situated on-site. We did this by installing a new wireless network solution where the wireless signal would reach further.

The desktops currently being used by the teachers and pupils were all out of warranty, old and slow. It was decided it would be more cost-effective to buy 35 workstations from one manufacturer, making it easier for maintenance and support by standardising the hardware.

The Loxdale Centre did not have a server for file and print services so were subjected to keeping data on the local machines. This had many potential flaws such as security and backup of data.

Installing a server was an obvious choice not just from a security and data point of view but for networking, management and support.

Spam has always been an issue for Loxdale and was easily rectified by implementing Loxdale's email to run through our email Spam filtering system which practically eliminated their spam issues overnight. Additionally we put in an email failover system which meant if their primary email system failed, they would continue to receive their emails whilst we resolved the issue.

Sagari are now maintaining Loxdale's IT Network on a fixed monthly managed support plan to alleviate anymore stress with regards to their IT Support so they can get on with their business knowing that they have the support and expertise at hand.

We will be looking at their cabling infrastructure next as it is a very old building and the current cabling was installed a long time ago. When we are happy that the entire infrastructure is working to an optimum level we will implement a Disaster Recovery Plan.